



# **AiPLS0102**

## **2-Channel Auto-Bidirectional Multi-Voltage Level Translator**

### **Product Specification**

**Specification Revision History:**

<b>Version</b>	<b>Date</b>	<b>Description</b>
2023-06-A1	2023-06	New
2024-12-A2	2024-12	Add the package form; modify the content
2026-02-A3	2026-02	Add SOT23-8 package form and ESD



# Contents

<b>1、 General Description.....</b>	<b>1</b>
<b>2、 Block Diagram And Pin Description .....</b>	<b>2</b>
2.1、 Block Diagram .....	2
2.2、 Pin Configurations.....	2
2.3、 Pin Description .....	2
<b>3、 Electrical Parameter .....</b>	<b>3</b>
3.1、 Absolute Maximum Ratings.....	3
3.2、 Recommended Operating Conditions.....	3
3.3、 Electrical Characteristics .....	4
<b>4、 Function Description .....</b>	<b>10</b>
4.1、 Function Table.....	10
4.2、 Bidirectional Translation Without Direction Control.....	11
4.3、 Pull-up Resistor Sizing .....	11
<b>5、 Package Information .....</b>	<b>13</b>
5.1、 VSSOP8 .....	13
5.2、 TSSOP8.....	14
5.3、 SOT23-8.....	15
<b>6、 Statements And Notes .....</b>	<b>16</b>
6.1、 The name and content of Hazardous substances or Elements in the product .....	16
6.2、 Notes .....	16



## 1、General Description

AiPLS0102 is a voltage level translator. The circuit supports bidirectional multi-voltage level translation in the range of 0.8V to 5V without direction control.

### Features:

- 2-channel bidirectional multi-voltage level translation
- support bidirectional multi-voltage level translation in the range of 0.8V to 5V
  - 0.8V to 1.8/2.5/3.3/5V
  - 1.2V to 1.8/2.5/3.3/5V
  - 1.8V to 2.5/3.3/5V
  - 2.5V to 3.3/5V
  - 3.3V to 5V
- transmission direction automatically adapted without direction control
- high-speed signal transmission
  - support up to 100MHz translation at  $\leq 30\text{pF}$  cap load
  - support up to 40MHz translation at  $\leq 50\text{pF}$  cap load
- low ON-resistance when the translation channel is ON-state
- IO ports have high impedance characteristics when the translation channel is off (EN=GND)
- no power supply requirement, no latch-up risk
- low power consumption
- package form: VSSOP8/TSSOP8/SOT23-8

### Ordering Information:

#### Reel packing specifications:

Part number	Packaging form	Marking code	Reel quantity	Boxed reel quantity	Notes
AiPLS0102YA8.TR	VSSOP8	EGXX	3000PCS/reel	3000PCS/box	Dimensions of plastic enclosure: 2.0mm×2.3mm Pin spacing: 0.50mm
AiPLS0102TA8.TR	TSSOP8	EGXX	3000PCS/reel	3000PCS/box	Dimensions of plastic enclosure: 3.0mm×3.0mm Pin spacing: 0.65mm
AiPLS0102GB238.TR	SOT23-8	AiPLS12	3000PCS/reel	30000PCS/box	Dimensions of plastic enclosure: 2.9mm×1.6mm Pin spacing: 0.65mm

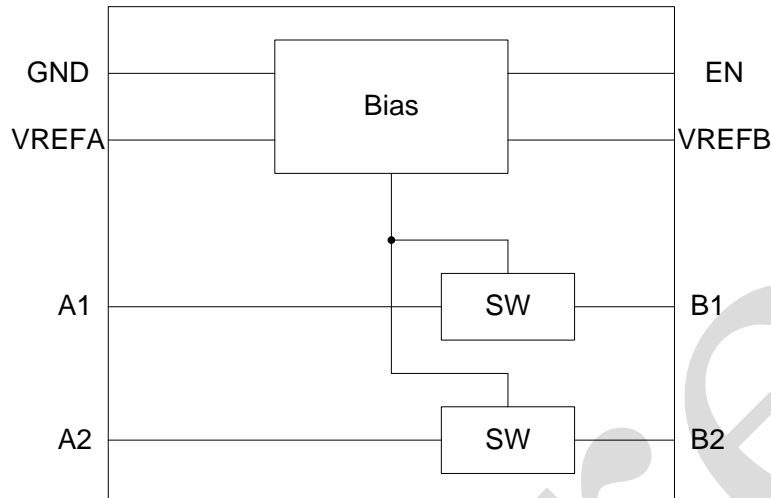
Note 1: “XX” refers to variable content, meaning package batch serial number.

Note 2: If the physical information is inconsistent with the ordering information, please refer to the actual product.

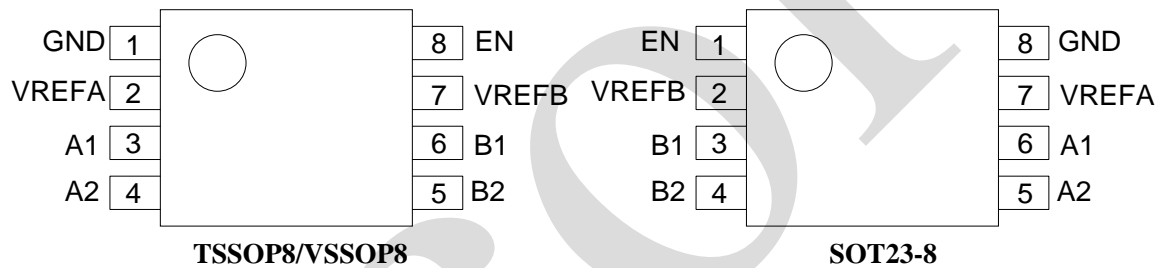


## 2、Block Diagram And Pin Description

### 2.1、Block Diagram



### 2.2、Pin Configurations



### 2.3、Pin Description

Pin No.		Pin Name	I/O	Description
TSSOP8/VSSOP8	SOT23-8			
1	8	GND	Power	ground
2	7	VREFA	I	A port reference voltage, connected to A port signal power supply
3/4	6/5	A1, A2	IO	signal transmission port A
5/6	4/3	B2, B1	IO	signal transmission port B
7	2	VREFB	I	B port reference voltage, connected to B port signal power supply via 200K resistance
8	1	EN	I	enable input, when connected to 0V, transmission channel is closed, and it is short circuited to VREFB and connected to the B port signal power supply through a 200K resistance to achieve automatic adaptation of signal transmission direction



## 3、Electrical Parameter

### 3.1、Absolute Maximum Ratings

( $T_{amb}=25^{\circ}\text{C}$ , unless otherwise specified)

Characteristic	Symbol	Value	Unit
reference voltage 1	VREFA	-0.3 to 7.0	V
reference voltage 2	VREFB	-0.3 to 7.0	V
reference voltage 3	EN	-0.3 to 7.0	V
input voltage	$V_{IN}$	-0.3 to 7.0	V
operating temperature	$T_{amb}$	-40 to 125	$^{\circ}\text{C}$
storage temperature	$T_{stg}$	-65 to +150	$^{\circ}\text{C}$
soldering temperature (10s)	$T_L$	260	$^{\circ}\text{C}$
electrostatic discharge (HBM)	ESD	2000	V

Note:

- 1) Stresses beyond those listed under "absolute maximum ratings" may cause permanent damage to the device. Exposure to absolute-maximum-rated conditions for extended periods may affect device reliability. These are only partial specified values and do not support functional operations for conditions other than those specified.
- 2) All voltage values are based on the ground port as the reference.

### 3.2、Recommended Operating Conditions

Parameter	Symbol	Min.	Typ.	Max.	Unit
VREFA voltage	$V_{VREFA}$	0	-	5.5	V
VREFB voltage	$V_{VREFB}$	0	-	5.5	V
EN voltage	$V_{EN}$	0	-	5.5	V
IO input voltage	$V_{IN}$	0	-	5.5	V
transmission channel current	$I_{SW}$	-	-	64	mA



### 3.3. Electrical Characteristics

( $T_{amb}=-40$  to  $85^{\circ}C$ , unless otherwise specified)

Parameter	Symbol	Conditions	Min.	Typ.	Max.	Unit
LOW-level output voltage	$V_{OL}$	see Figure 1 VDD1=1.365V, VDD2=3V VBn=0.175V, VAn output or VAn=0.175V, VBn output Ipass=15.2mA	-	-	350	mV
input clamp voltage	Vclamp	Ii=-18mA, $V_{GREF}=0V$	-	-	-1.2	V
EN input leakage current	$I_{GREF}$	$V_{EN}=0V$	-	-	5	$\mu A$
ON resistance	Ron	VREFA=3.3V, VREFB=EN=5V $V_I=0V$ , $I_O=64mA$	-	8	-	$\Omega$
		VREFA=1.8V, VREFB=EN=5V $V_I=0V$ , $I_O=64mA$	-	9	-	$\Omega$
		VREFA=1.0V, VREFB=EN=5V $V_I=0V$ , $I_O=64mA$	-	10	-	$\Omega$
		VREFA=1.8V, VREFB=EN=5V $V_I=0V$ , $I_O=32mA$	-	10	-	$\Omega$
		VREFA=2.5V, VREFB=EN=5V $V_I=0V$ , $I_O=32mA$	-	15	-	$\Omega$
		VREFA=3.3V, VREFB=EN=5V $V_I=1.8V$ , $I_O=15mA$	-	9	-	$\Omega$
		VREFA=1.8V, VREFB=EN=3.3V $V_I=1.0V$ , $I_O=10mA$	-	18	-	$\Omega$
		VREFA=1.0V, VREFB=EN=3.3V $V_I=0V$ , $I_O=10mA$	-	20	-	$\Omega$
		VREFA=1.0V, VREFB=EN=1.8V $V_I=0V$ , $I_O=10mA$	-	30	-	$\Omega$



( $T_{amb}=-40$  to  $125^{\circ}\text{C}$ , unless otherwise specified)

Parameter	Symbol	Conditions	Min.	Typ.	Max.	Unit
LOW-level output voltage	$V_{OL}$	see Figure 1 $V_{DD1}=1.365\text{V}$ , $V_{DD2}=3\text{V}$ $V_{Bn}=0.175\text{V}$ , $V_{An}$ output or $V_{An}=0.175\text{V}$ , $V_{Bn}$ output $I_{pass}=15.2\text{mA}$	-	-	500	mV
input clamp voltage	$V_{clamp}$	$I_i=-18\text{mA}$ , $V_{GREF}=0\text{V}$	-	-	-1.2	V
EN input leakage current	$I_{GREF}$	$V_{EN}=0\text{V}$	-	-	15	$\mu\text{A}$
ON resistance	$R_{on}$	$V_{REFA}=3.3\text{V}$ , $V_{REFB}=\text{EN}=5\text{V}$ $V_I=0\text{V}$ , $I_O=64\text{mA}$	-	12	-	$\Omega$
		$V_{REFA}=1.8\text{V}$ , $V_{REFB}=\text{EN}=5\text{V}$ $V_I=0\text{V}$ , $I_O=64\text{mA}$	-	14	-	$\Omega$
		$V_{REFA}=1.0\text{V}$ , $V_{REFB}=\text{EN}=5\text{V}$ $V_I=0\text{V}$ , $I_O=64\text{mA}$	-	15	-	$\Omega$
		$V_{REFA}=1.8\text{V}$ , $V_{REFB}=\text{EN}=5\text{V}$ $V_I=0\text{V}$ , $I_O=32\text{mA}$	-	15	-	$\Omega$
		$V_{REFA}=2.5\text{V}$ , $V_{REFB}=\text{EN}=5\text{V}$ $V_I=0\text{V}$ , $I_O=32\text{mA}$	-	23	-	$\Omega$
		$V_{REFA}=3.3\text{V}$ , $V_{REFB}=\text{EN}=5\text{V}$ $V_I=1.8\text{V}$ , $I_O=15\text{mA}$	-	14	-	$\Omega$
		$V_{REFA}=1.8\text{V}$ , $V_{REFB}=\text{EN}=3.3\text{V}$ $V_I=1.0\text{V}$ , $I_O=10\text{mA}$	-	27	-	$\Omega$
		$V_{REFA}=1.0\text{V}$ , $V_{REFB}=\text{EN}=3.3\text{V}$ $V_I=0\text{V}$ , $I_O=10\text{mA}$	-	30	-	$\Omega$
		$V_{REFA}=1.0\text{V}$ , $V_{REFB}=\text{EN}=1.8\text{V}$ $V_I=0\text{V}$ , $I_O=10\text{mA}$	-	45	-	$\Omega$

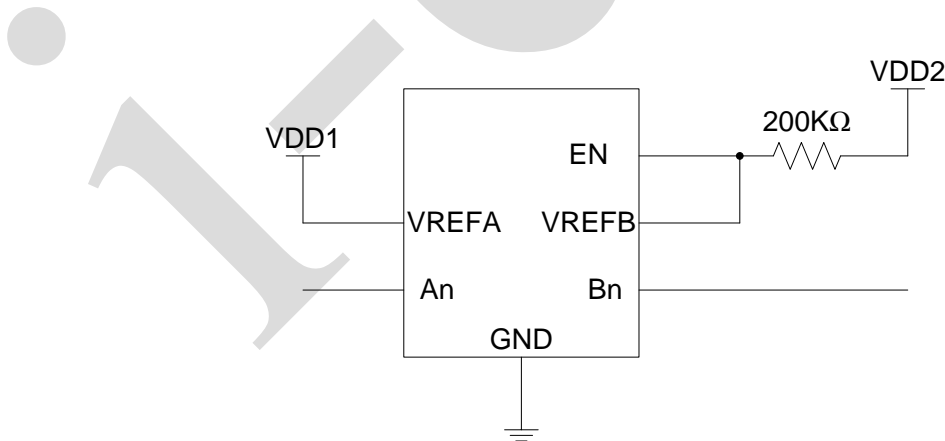


Figure 1



( $T_{amb}=-40$  to  $85^{\circ}\text{C}$ , unless otherwise specified)

Parameter	Symbol	Conditions	Min.	Typ.	Max.	Unit
propagation delay 1 (see Figure 3)	$t_{PLH}$ $t_{PHL}$	test circuit see Figure 2 VDD1=1.365V to 1.635V VDD2=3V to 3.6V VDD3=2.36V to 2.63V $t_r=t_f \leq 3\text{ns}$ An input, Bn output	0.5	1.5	5.5	ns

( $T_{amb}=-40$  to  $125^{\circ}\text{C}$ , unless otherwise specified)

Parameter	Symbol	Conditions	Min.	Typ.	Max.	Unit
propagation delay 1 (see Figure 3)	$t_{PLH}$ $t_{PHL}$	test circuit see Figure 2 VDD1=1.365V to 1.635V VDD2=3V to 3.6V VDD3=2.36V to 2.63V $t_r=t_f \leq 3\text{ns}$ An input, Bn output	0.5	3.0	10.0	ns

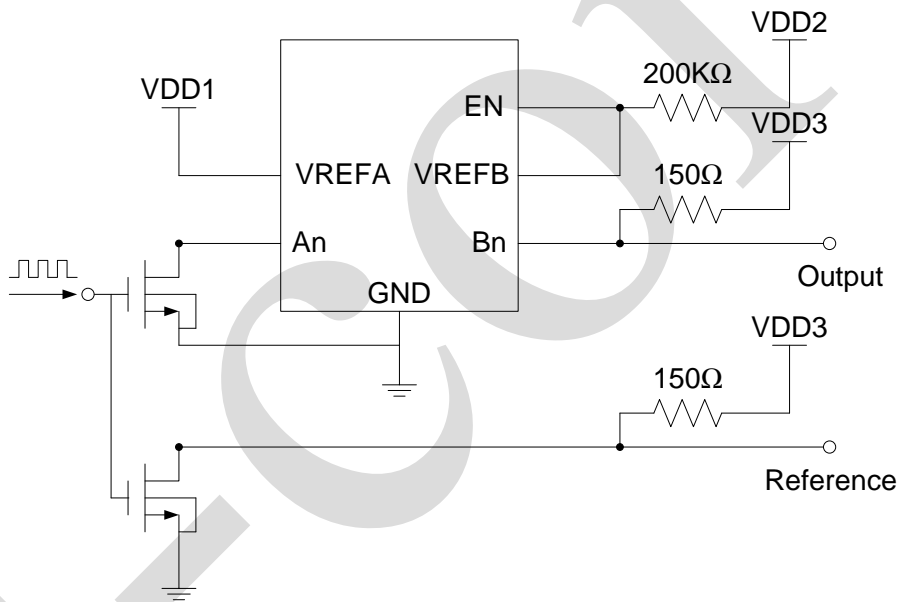


Figure 2

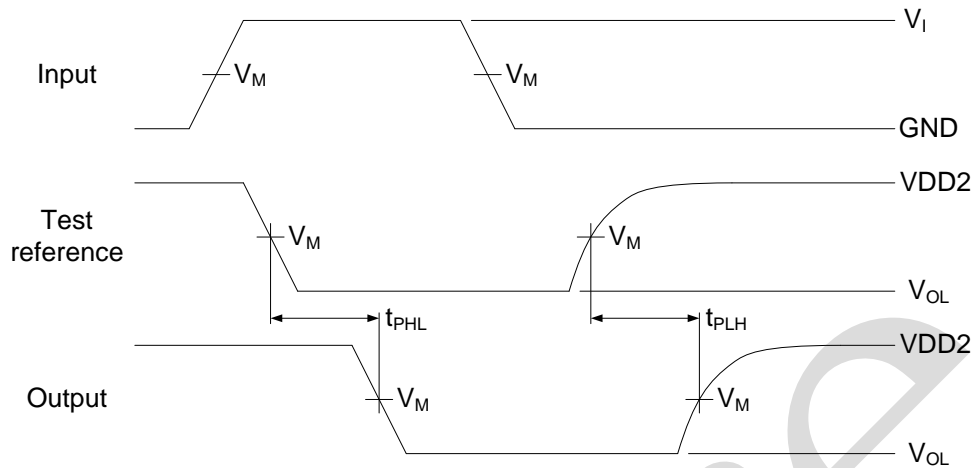


Figure 3

( $T_{amb} = -40$  to  $85^{\circ}\text{C}$ , unless otherwise specified)

Parameter	Symbol	Conditions	Min.	Typ.	Max.	Unit
propagation delay 2 (see Figure 5)	$t_{pd}$	test circuit see Figure 4 $V_{EN} = 5V \pm 0.5V$ VREFA, VREFB floating An input, Bn output or Bn input, An output	-	-	250	ps

( $T_{amb} = -40$  to  $125^{\circ}\text{C}$ , unless otherwise specified)

Parameter	Symbol	Conditions	Min.	Typ.	Max.	Unit
propagation delay 2 (see Figure 5)	$t_{pd}$	test circuit see Figure 4 $V_{EN} = 5V \pm 0.5V$ VREFA, VREFB floating An input, Bn output or Bn input, An output	-	-	400	ps

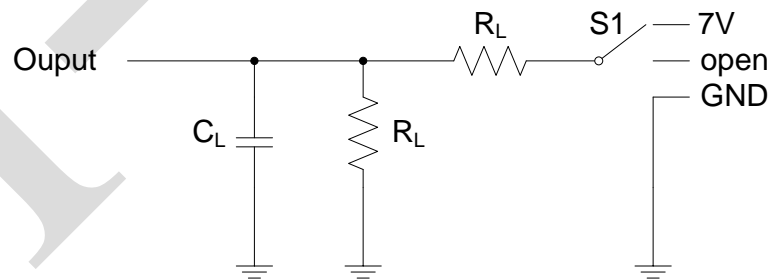


Figure 4

$C_L$  = load capacitance including package, PCB and probe parasitic capacitance.

Test	$C_L$	$R_L$	S1
$t_{pd}$	50pF	500 $\Omega$	open

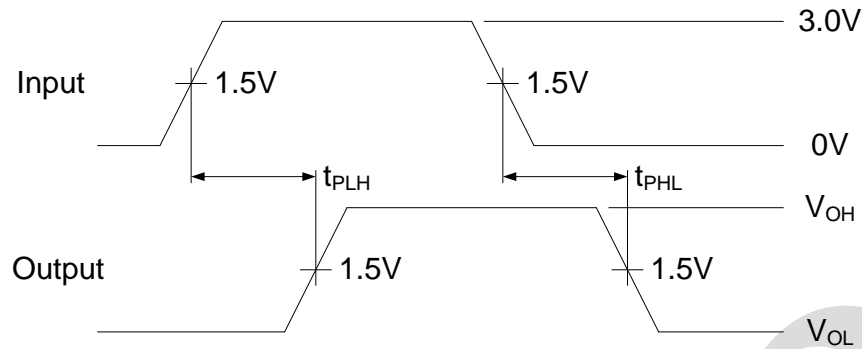


Figure 5

( $T_{amb}=-40$  to  $85^{\circ}\text{C}$ , unless otherwise specified)

Parameter	Symbol	Conditions	Min.	Typ.	Max.	Unit	
propagation delay 3 (see Figure 6/7)	$t_{PLH}$	S1 connected to open EN=3.3V, $V_M=1.15\text{V}$ $V_{IH}=3.3\text{V}$ , $V_{IL}=0\text{V}$ $R_L=300$	$C_L=50\text{pF}$	-	1.1	-	ns
			$C_L=30\text{pF}$	-	0.7	-	ns
			$C_L=15\text{pF}$	-	0.3	-	ns
	$t_{PHL}$		$C_L=50\text{pF}$	-	1.2	-	ns
			$C_L=30\text{pF}$	-	0.8	-	ns
			$C_L=15\text{pF}$	-	0.4	-	ns
	$t_{PLH}$	S1 connected to open EN=2.5V, $V_M=0.75\text{V}$ $V_{IH}=2.5\text{V}$ , $V_{IL}=0\text{V}$ $R_L=300$	$C_L=50\text{pF}$	-	1.2	-	ns
			$C_L=30\text{pF}$	-	0.8	-	ns
			$C_L=15\text{pF}$	-	0.35	-	ns
	$t_{PHL}$		$C_L=50\text{pF}$	-	1.3	-	ns
			$C_L=30\text{pF}$	-	1.0	-	ns
			$C_L=15\text{pF}$	-	0.5	-	ns
	$t_{PLH}$	S1 connected to VH EN=3.3V, $V_M=1.15\text{V}$ $V_{IH}=2.3\text{V}$ , $V_{IL}=0\text{V}$ VH=3.3V $R_L=300$	$C_L=50\text{pF}$	-	2.1	-	ns
			$C_L=30\text{pF}$	-	1.55	-	ns
			$C_L=15\text{pF}$	-	0.9	-	ns
	$t_{PHL}$		$C_L=50\text{pF}$	-	2.2	-	ns
$C_L=30\text{pF}$			-	1.65	-	ns	
$C_L=15\text{pF}$			-	1.0	-	ns	
$t_{PLH}$	S1 connected to VH EN=2.5V, $V_M=0.75\text{V}$ $V_{IH}=1.5\text{V}$ , $V_{IL}=0\text{V}$ VH=2.5V $R_L=300$	$C_L=50\text{pF}$	-	1.1	-	ns	
		$C_L=30\text{pF}$	-	0.9	-	ns	
		$C_L=15\text{pF}$	-	0.45	-	ns	
$t_{PHL}$		$C_L=50\text{pF}$	-	1.3	-	ns	
		$C_L=30\text{pF}$	-	1.1	-	ns	
		$C_L=15\text{pF}$	-	0.6	-	ns	



( $T_{amb}=-40$  to  $125^{\circ}C$ , unless otherwise specified)

Parameter	Symbol	Conditions	Min.	Typ.	Max.	Unit		
propagation delay 3 (see Figure 6/7)	$t_{PLH}$	S1 connected to open EN=3.3V, $V_M=1.15V$ $V_{IH}=3.3V$ , $V_{IL}=0V$ $R_L=300$	$C_L=50pF$	-	1.7	-	ns	
			$C_L=30pF$	-	1.0	-	ns	
			$C_L=15pF$	-	0.5	-	ns	
	$t_{PHL}$		$C_L=50pF$	-	1.8	-	ns	
			$C_L=30pF$	-	1.2	-	ns	
			$C_L=15pF$	-	0.6	-	ns	
	$t_{PLH}$		S1 connected to open EN=2.5V, $V_M=0.75V$ $V_{IH}=2.5V$ , $V_{IL}=0V$ $R_L=300$	$C_L=50pF$	-	1.8	-	ns
				$C_L=30pF$	-	1.2	-	ns
				$C_L=15pF$	-	0.5	-	ns
	$t_{PHL}$	$C_L=50pF$		-	1.9	-	ns	
		$C_L=30pF$		-	1.5	-	ns	
		$C_L=15pF$		-	0.8	-	ns	
	$t_{PLH}$	S1 connected to VH EN=3.3V, $V_M=1.15V$ $V_{IH}=2.3V$ , $V_{IL}=0V$ VH=3.3V $R_L=300$		$C_L=50pF$	-	3.1	-	ns
				$C_L=30pF$	-	2.3	-	ns
				$C_L=15pF$	-	1.4	-	ns
	$t_{PHL}$		$C_L=50pF$	-	3.3	-	ns	
			$C_L=30pF$	-	2.5	-	ns	
			$C_L=15pF$	-	1.5	-	ns	
$t_{PLH}$	S1 connected to VH EN=2.5V, $V_M=0.75V$ $V_{IH}=1.5V$ , $V_{IL}=0V$ VH=2.5V $R_L=300$		$C_L=50pF$	-	1.7	-	ns	
			$C_L=30pF$	-	1.4	-	ns	
			$C_L=15pF$	-	0.7	-	ns	
$t_{PHL}$		$C_L=50pF$	-	1.9	-	ns		
		$C_L=30pF$	-	1.7	-	ns		
		$C_L=15pF$	-	0.9	-	ns		

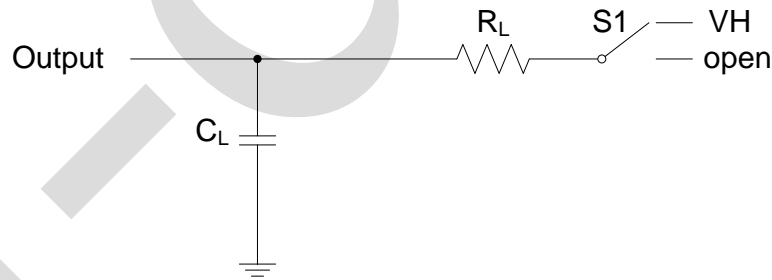


Figure 6

$C_L$ =load capacitance including package, PCB and probe parasitic capacitance.

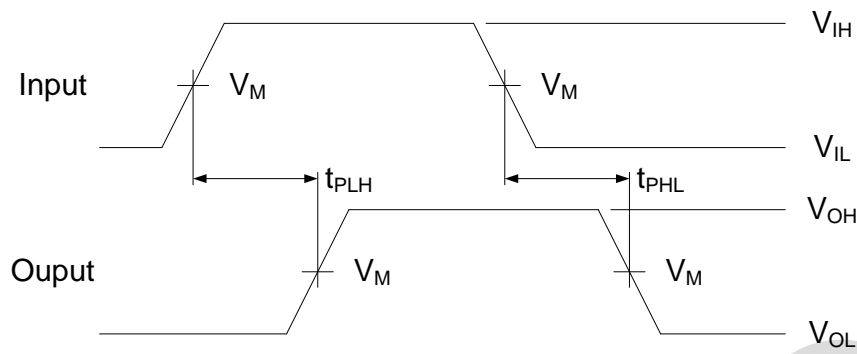


Figure 7

## 4、Function Description

### 4.1、Function Table

EN	VREFB	VREFA	Bn input	An output	Transmission Channel
L	X	X	X	X	OFF
H (V <sub>EN</sub> )	H (V <sub>VREFB</sub> )	H (V <sub>VREFA</sub> )	V <sub>VREFB</sub>	V <sub>VREFA</sub>	ON
H (V <sub>EN</sub> )	H (V <sub>VREFB</sub> )	H (V <sub>VREFA</sub> )	L	L	ON

EN	VREFB	VREFA	An input	Bn output	Transmission Channel
L	X	X	X	X	OFF
H (V <sub>EN</sub> )	H (V <sub>VREFB</sub> )	H (V <sub>VREFA</sub> )	V <sub>VREFA</sub>	V <sub>H</sub>	ON
H (V <sub>EN</sub> )	H (V <sub>VREFB</sub> )	H (V <sub>VREFA</sub> )	L	L	ON

Note: H=HIGH voltage level; L=LOW voltage level; X=don't care.

$V_{EN} > V_{VREFA}$ ,  $V_{VREFB} > V_{VREFA}$ ,  $V_H > V_{VREFA}$  for normal operation

When  $V_{EN}$  is 1.5V higher than  $V_{VREFA}$ , the circuit has the best signal transmission performance.

When An is the output, An can be pulled up to  $V_{VREFA}$  by external resistance or without external pull-up resistance.

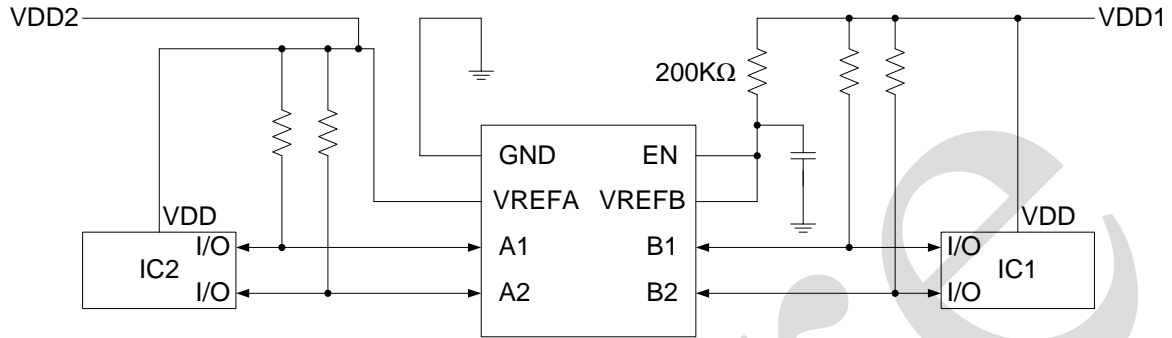
When Bn is the output, Bn must be pulled up through the external resistance to a higher level than  $V_{VREFA}$ .

When An/Bn outputs LOW, LOW-level output voltage value is determined by LOW-level input voltage value, not by GND.



## 4.2、 Bidirectional Translation Without Direction Control

When applied to bidirectional signal transmission, and there is no control signal to indicate the direction of signal transmission, the VREFB must be connected to the EN and connected to the higher level by a 200KΩ resistance, and a filter capacitor near the EN port, while the SREF is connected to the lower level. Both side signals can be push-pull or open-drain. But when signal is open-drain, an external pull-up resistance must be presented.

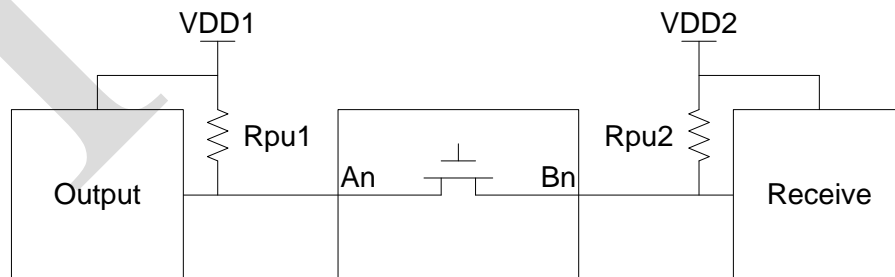


When  $VDD1 \geq VDD2 + 1.0V$ , the pull-up resistance of IO on the IC2 can be omitted.

## 4.3、 Pull-up Resistor Sizing

Adding the pull-up resistance to IO can effectively improve the signal transmission efficiency and get a more complete waveform. Pull-up resistor value depends on several factors:

1. The low level driving ability of output device and the low level recognition ability of receive device  
When the output device outputs LOW-level, the current generated by the pull-up resistance of the An and Bn port will be absorbed by the low side drive of the output device, LOW-level of transmission will be pulled up. When the low level is pulled up beyond the low level recognition range of the receive device, the signal transmission will be abnormal. Therefore, the pull-up resistor should be selected according to the above factors, and the resistance value should not be set too small.
2. The rate of transmission signal  
When An is input, Bn is output, due to the requirement that VDD2 is higher than VDD1, this time due to the transmission principle of the circuit leads to the high level output of Bn port is to rely on Rpu2 pulled up, at this time the size of Rpu2 determines the rise rate of the signal of Bn, and further determines the highest frequency of the signal at Bn. Therefore, the resistance value cannot be set too large.





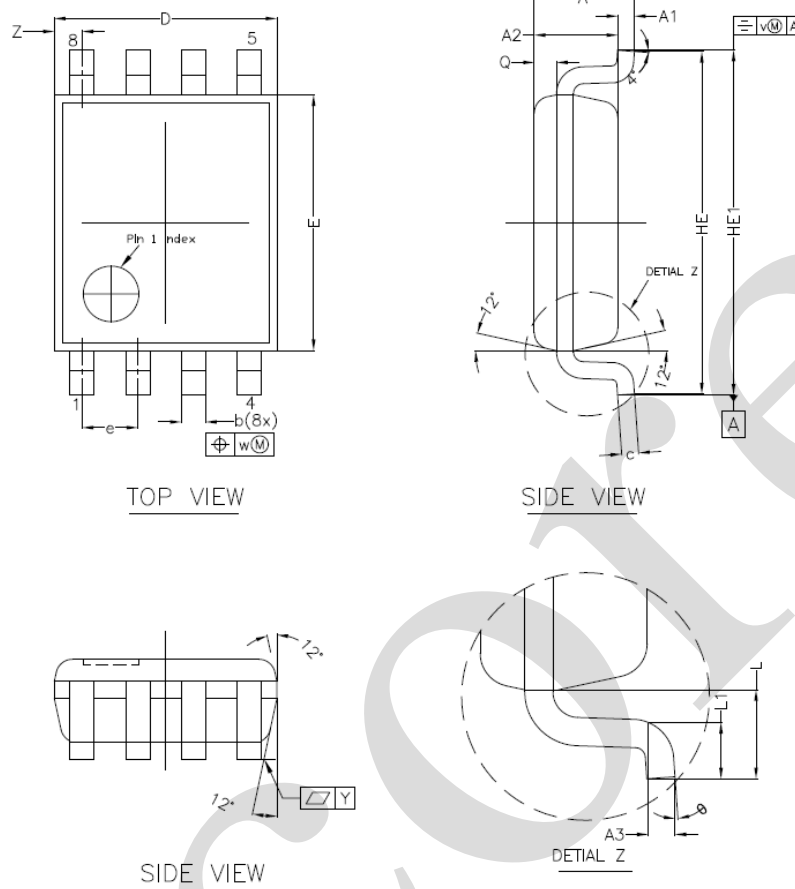
Pull-up resistor values:

LOW-level output current of output device $V_{OL}=0.2V$		15mA		10mA		3mA	
VDD1	VDD2	Rpu1	Rpu2	Rpu1	Rpu2	Rpu1	Rpu2
0.8	1.8	147	147	220	220	733	733
0.8	2.5	193	193	290	290	967	967
0.8	3.3	247	247	370	370	1233	1233
0.8	5.0	360	360	540	540	1800	1800
1.2	1.8	173	173	260	260	867	867
1.2	2.5	220	220	330	330	1100	1100
1.2	3.3	273	273	410	410	1367	1367
1.2	5.0	387	387	580	580	1933	1933
1.5	1.8	193	193	290	290	967	967
1.5	2.5	240	240	360	360	1200	1200
1.5	3.3	293	293	440	440	1467	1467
1.5	5.0	407	407	610	610	2033	2033
1.8	2.5	260	260	390	390	1300	1300
1.8	3.3	313	313	470	470	1567	1567
1.8	5.0	427	427	640	640	2133	2133
2.5	3.3	360	360	540	540	1800	1800
2.5	5.0	473	473	710	710	2367	2367
3.3	5.0	527	527	790	790	2633	2633
<VDD2	1.0	-	53	-	80	-	267
<VDD2	1.2	-	67	-	100	-	333
<VDD2	1.5	-	87	-	130	-	433
<VDD2	1.8	-	107	-	160	-	533
<VDD2	2.5	-	153	-	230	-	767
<VDD2	3.3	-	207	-	310	-	1033
<VDD2	5.0	-	320	-	480	-	1600



## 5、 Package Information

### 5.1、 VSSOP8

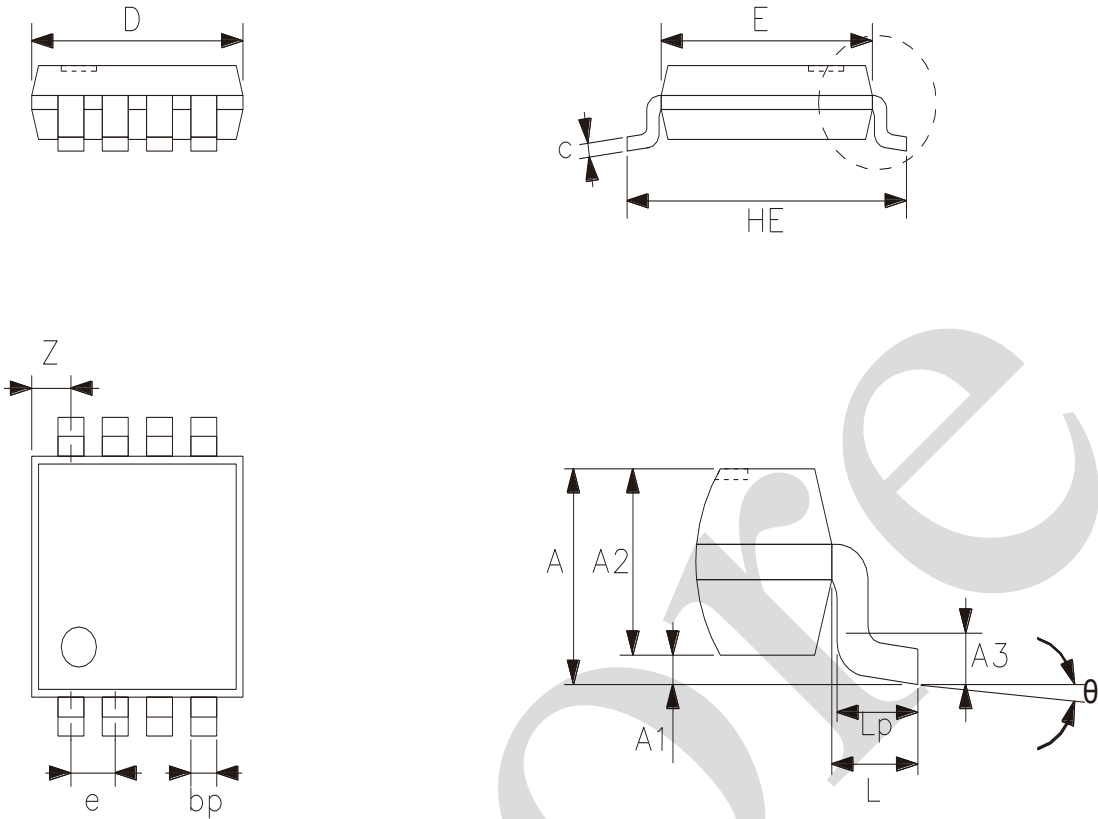


NOTES  
 1.0 COP  
 DIE ATTA  
 2.0 D E

2023/12/A	Dimensions In Millimeters	
Symbol	Min	Max
A	—	1.00
A1	0.00	0.15
A2	0.60	0.85
A3	0.12	
Q	0.19	0.21
b	0.17	0.27
c	0.08	0.23
D	1.90	2.10
E	2.20	2.40
HE	3.00	3.20
HE1	3.00	3.40
e	0.50	
L	0.40	
L1	0.15	0.40
Y	0.10	
Z	0.10	0.40
θ	0°	8°



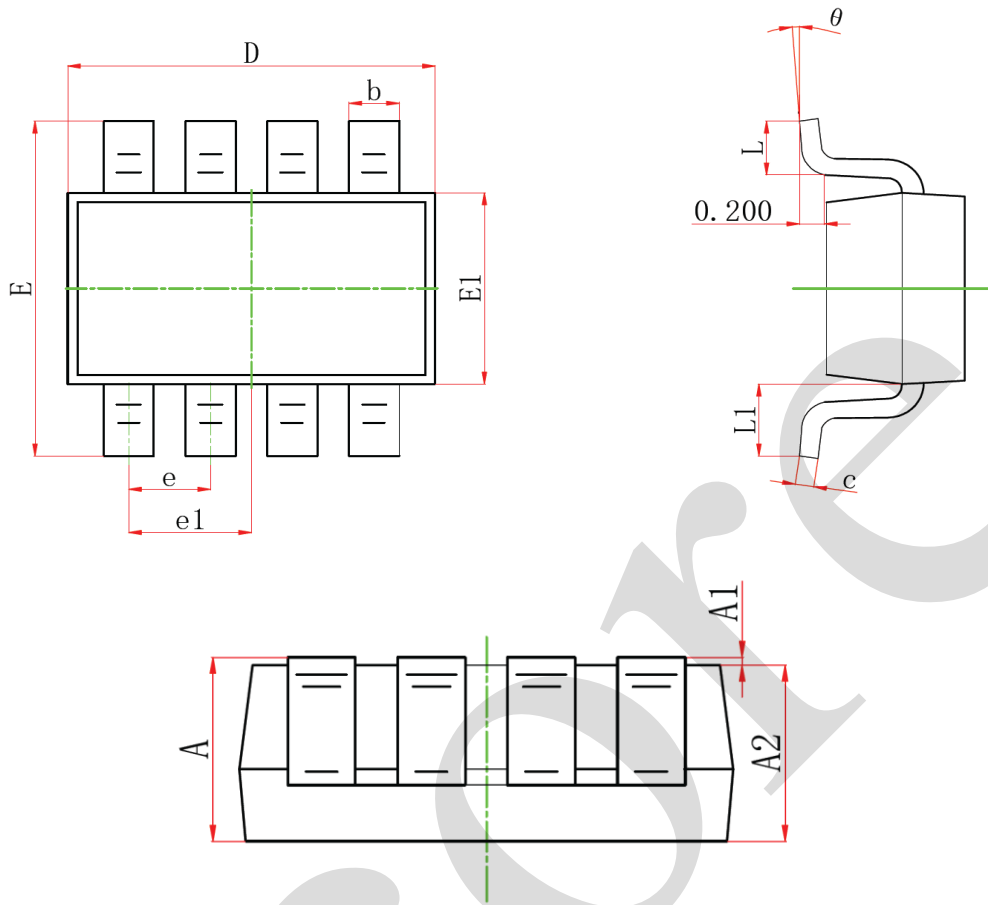
## 5.2、TSSOP8



2023/12/A	Dimensions In Millimeters	
Symbol	Min	Max
A	—	1.10
A1	0	0.15
A2	0.75	0.95
A3	0.25	
bp	0.22	0.38
c	0.08	0.18
D	2.90	3.10
E	2.90	3.10
HE	3.90	4.10
L	0.50	
Lp	0.33	0.47
e	0.65	
Z	0.35	0.70
θ	0°	8°



## 5.3、SOT23-8



2025/07/A Symbol	Dimensions In Millimeters	
	Min.	Max.
A	1.05	1.25
A1	0.00	0.10
A2	1.05	1.15
b	0.30	0.50
c	0.10	0.20
D	2.82	3.02
E	2.65	2.95
E1	1.50	1.70
e	0.65	
e1	0.975 BSC	
L	0.30	0.60
L1	0.6 REF	
$\theta$	0°	8°



## 6、 Statements And Notes

### 6.1、 The name and content of Hazardous substances or Elements in the product

Part name	Hazardous substances or Elements									
	Lead and lead compounds	Mercury and mercury compounds	Cadmium and cadmium compounds	Hexavalent chromium compounds	Polybrominated biphenyls	Polybrominated biphenyl ethers	Dibutyl phthalate	Butylbenzyl phthalate	Di-2-ethylhexyl phthalate	Diisobutyl phthalate
Lead frame	○	○	○	○	○	○	○	○	○	○
Plastic resin	○	○	○	○	○	○	○	○	○	○
Chip	○	○	○	○	○	○	○	○	○	○
The lead	○	○	○	○	○	○	○	○	○	○
Plastic sheet installed	○	○	○	○	○	○	○	○	○	○
explanation	○: Indicates that the content of hazardous substances or elements in the detection limit of the following the SJ/T11363-2006 standard. ×: Indicates that the content of hazardous substances or elements exceeding the SJ/T11363-2006 Standard limit requirements.									

### 6.2、 Notes

We recommend you to read this chapter carefully before using this product.

The information in this chapter is provided for reference only and i-Core disclaims any express or implied warranties, including but not limited to applicability, special application or non-infringement of third party rights.

This product is not suitable for critical equipment such as life-saving, life-sustaining or safety equipment. It is also not suitable for applications that may result in personal injury, death, or serious property or environmental damage due to product malfunction or failure. I-Core will not be liable for any damages incurred by the customers at their own risk for such applications.

The customer is responsible for conducting all necessary tests i-Core's application to avoid failure in the application or the application of the customer's third party users. I-Core does not accept any liability.

The Company reserves the right to change or improve the information published in this chapter at any time. The information in this chapter are subject to change without notice. We recommend the customer to consult our sales staff before purchasing.

Please obtain related materials form i-Core's regular channels and we are not responsible for its content if it is provided by sources other than our company.

In case of any conflict between the Chinese and English version, the version is subject to the Chinese one.