



# **AiP74HC4094**

## **8-stage Shift-and-store Bus Register**

### **Product Specification**

**Specification Revision History:**

| <b>Version</b> | <b>Date</b> | <b>Description</b>             |
|----------------|-------------|--------------------------------|
| 2019-07-A1     | 2019-07     | New                            |
| 2023-04-B1     | 2023-04     | Update the template            |
| 2024-03-B2     | 2024-03     | Modify the content             |
| 2026-04-B3     | 2026-04     | Update the package information |



# Contents

|  |           |
|--|-----------|
| <b>1、 General Description.....</b>   | <b>3</b>  |
| <b>2、 Block Diagram And Pin Description .....</b>                                  | <b>5</b>  |
| 2.1、 Block Diagram .....   | 5         |
| 2.2、 Pin Configurations.....   | 6         |
| 2.3、 Pin Description .....   | 6         |
| 2.4、 Function Table.....   | 7         |
| <b>3、 Electrical Parameter .....</b>   | <b>7</b>  |
| 3.1、 Absolute Maximum Ratings.....   | 7         |
| 3.2、 Recommended Operating Conditions.....   | 7         |
| 3.3、 Electrical Characteristics .....  | 8         |
| 3.3.1、 DC Characteristics 1 .....  | 8         |
| 3.3.2、 DC Characteristics 2 .....  | 9         |
| 3.3.3、 DC Characteristics 3 .....  | 10        |
| 3.3.4、 AC Characteristics .....  | 11        |
| <b>4、 Testing Circuit .....</b>  | <b>12</b> |
| 4.1、 AC Testing Circuit .....  | 12        |
| 4.2、 AC Testing Waveforms.....   | 12        |
| 4.3、 Measurement Points .....  | 14        |
| 4.4、 Test Data .....   | 14        |
| <b>5、 Package Information .....</b>  | <b>15</b> |
| 5.1、 DIP16 .....   | 15        |
| 5.2、 SOP16 .....   | 16        |
| 5.3、 TSSOP16.....  | 17        |
| <b>6、 Statements And Notes .....</b>   | <b>18</b> |
| 6.1、 The name and content of Hazardous substances or Elements in the product ..... | 18        |
| 6.2、 Notes .....   | 18        |



## 1、General Description

The AiP74HC4094 is an 8-stage serial shift register. It has a storage latch associated with each stage for strobing data from the serial input to parallel buffered 3-state outputs QP0 to QP7. The parallel outputs may be connected directly to common bus lines. Data is shifted on positive-going clock transitions. The data in each shift register stage is transferred to the storage register when the strobe (STR) input is HIGH. Data in the storage register appears at the outputs whenever the output enable (OE) signal is HIGH.

Two serial outputs (QS1 and QS2) are available for cascading a number of AiP74HC4094 devices. Serial data is available at QS1 on positive-going clock edges to allow high-speed operation in cascaded systems with a fast clock rise time. The same serial data is available at QS2 on the next negative going clock edge. This is used for cascading AiP74HC4094 devices when the clock has a slow rise time.

It operates over a recommended  $V_{DD}$  power supply range of 3V to 15V referenced to  $V_{SS}$  (usually ground). Unused inputs must be connected to  $V_{DD}$ ,  $V_{SS}$ , or another input.

### Features:

- Wide supply voltage range from 3V to 15V
- Fully static operation
- 5V, 10V, and 15V parametric ratings
- Standardized symmetrical output characteristics
- Specified from -40°C to +125°C
- Packaging information: DIP16/SOP16/TSSOP16

**Ordering Information:****Tube packing specifications:**

| Part number        | Packaging form | Marking code | Tube quantity  | Boxed tube quantity | Boxed quantity   | Notes  |
|--------------------|----------------|--------------|----------------|---------------------|------------------|--|
| AiP74HC4094DA16.TB | DIP16          | 74HC4094     | 25<br>PCS/tube | 40<br>tube/box      | 1000<br>PCS/box  | Dimensions of plastic enclosure:<br>19.0mm×6.4mm<br>Pin spacing:<br>2.54mm |
| AiP74HC4094SA16.TB | SOP16          | AiP74HC4094  | 50<br>PCS/tube | 200<br>tube/box     | 10000<br>PCS/box | Dimensions of plastic enclosure:<br>10.0mm×3.9mm<br>Pin spacing:<br>1.27mm |
| AiP74HC4094TA16.TB | TSSOP16        | 74HC4094     | 96<br>PCS/tube | 200<br>tube/box     | 19200<br>PCS/box | Dimensions of plastic enclosure:<br>5.0mm×4.4mm<br>Pin spacing:<br>0.65mm  |

**Reel packing specifications:**

| Part number        | Packaging form | Marking code | Reel quantity    | Boxed reel quantity | Notes  |
|--------------------|----------------|--------------|------------------|---------------------|--|
| AiP74HC4094SA16.TR | SOP16          | AiP74HC4094  | 4000<br>PCS/reel | 8000<br>PCS/box     | Dimensions of plastic enclosure:<br>10.0mm×3.9mm<br>Pin spacing:<br>1.27mm |
| AiP74HC4094TA16.TR | TSSOP16        | 74HC4094     | 5000<br>PCS/reel | 10000<br>PCS/box    | Dimensions of plastic enclosure:<br>5.0mm×4.4mm<br>Pin spacing:<br>0.65mm  |

Note: If the physical information is inconsistent with the ordering information, please refer to the actual product.



## 2、Block Diagram And Pin Description

### 2.1、Block Diagram

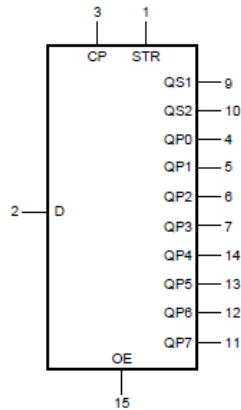


Figure 1. Logic symbol

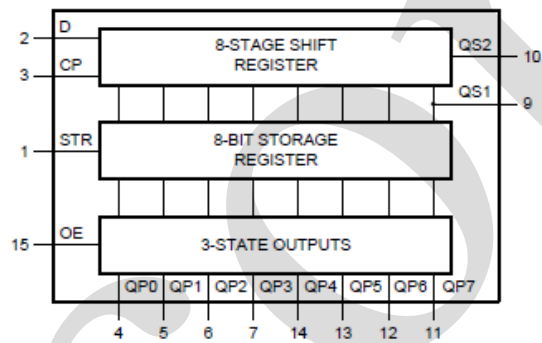


Figure 2. Functional diagram

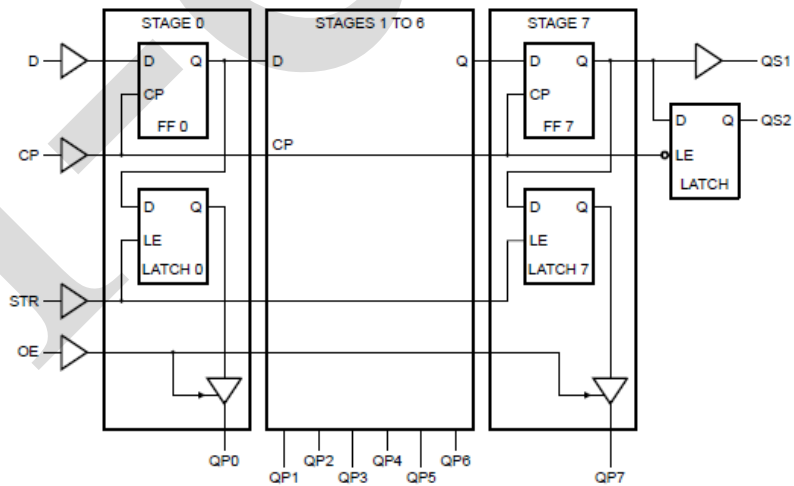


Figure 3. Logic diagram

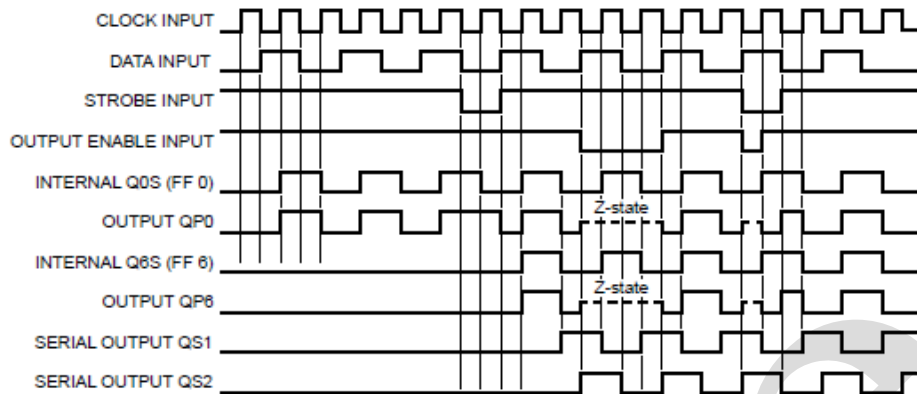
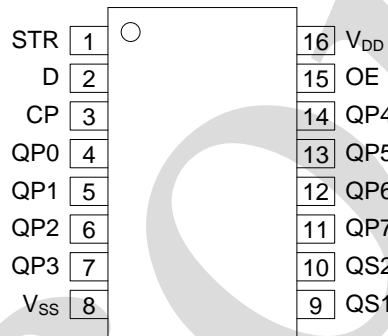


Figure 4. Timing diagram

## 2.2. Pin Configurations



## 2.3. Pin Description

| Pin No. | Pin Name        | Description         |
|---------|-----------------|---------------------|
| 1       | STR             | strobe input        |
| 2       | D               | data input          |
| 3       | CP              | clock input         |
| 4       | QP0             | parallel output     |
| 5       | QP1             | parallel output     |
| 6       | QP2             | parallel output     |
| 7       | QP3             | parallel output     |
| 8       | V <sub>SS</sub> | ground (0V)         |
| 9       | QS1             | serial output       |
| 10      | QS2             | serial output       |
| 11      | QP7             | parallel output     |
| 12      | QP6             | parallel output     |
| 13      | QP5             | parallel output     |
| 14      | QP4             | parallel output     |
| 15      | OE              | output enable input |
| 16      | V <sub>DD</sub> | supply voltage      |



## 2.4、Function Table

| Input |    |     |   | Parallel output |       | Serial output |     |
|-------|----|-----|---|-----------------|-------|---------------|-----|
| CP    | OE | STR | D | QP0             | QPn   | QS1           | QS2 |
| ↑     | L  | X   | X | Z               | Z     | Q6S           | NC  |
| ↓     | L  | X   | X | Z               | Z     | NC            | Q7S |
| ↑     | H  | L   | X | NC              | NC    | Q6S           | NC  |
| ↑     | H  | H   | L | L               | QPn-1 | Q6S           | NC  |
| ↑     | H  | H   | H | H               | QPn-1 | Q6S           | NC  |
| ↓     | H  | H   | H | NC              | NC    | NC            | Q7S |

Note: H=HIGH voltage level; L=LOW voltage level; X=don't care; Z=HIGH-impedance OFF-state;

NC=no change; ↑=positive-going transition; ↓=negative-going transition;

Q6S=the data in register stage 6 before the LOW to HIGH clock transition;

Q7S=the data in register stage 7 before the HIGH to LOW clock transition.

## 3、Electrical Parameter

### 3.1、Absolute Maximum Ratings

(Voltages are referenced to  $V_{SS}$  (ground=0V), unless otherwise specified.)

| Parameter               | Symbol    | Conditions            | Min.      | Max.         | Unit |
|-------------------------|-----------|-----------------------|-----------|--------------|------|
| supply voltage          | $V_{DD}$  | -                     | -0.5      | +18          | V    |
| DC input current        | $I_{IK}$  | any one input         | -         | ±20          | mA   |
| input voltage           | $V_I$     | all inputs            | -0.5      | $V_{DD}+0.5$ | V    |
| storage temperature     | $T_{stg}$ | -                     | -65       | +150         | °C   |
| total power dissipation | $P_{tot}$ | -                     | -         | 500          | mW   |
| device dissipation      | $P$       | per output transistor | -         | 100          | mW   |
| soldering temperature   | $T_L$     | 10s                   | DIP       | 245          | °C   |
|                         |           |                       | SOP/TSSOP | 260          | °C   |

### 3.2、Recommended Operating Conditions

| Parameter                | Symbol             | Conditions   | Min. | Typ. | Max. | Unit |
|--------------------------|--------------------|--------------|------|------|------|------|
| supply voltage           | $V_{DD}$           | -            | 3    | -    | 15   | V    |
| ambient temperature      | $T_{amb}$          | in free air  | -40  | -    | +125 | °C   |
| data setup time          | $t_{su}$           | $V_{DD}=5V$  | 125  | -    | -    | ns   |
|                          |                    | $V_{DD}=10V$ | 55   | -    | -    | ns   |
|                          |                    | $V_{DD}=15V$ | 35   | -    | -    | ns   |
| clock pulse width        | $t_w$              | $V_{DD}=5V$  | 200  | -    | -    | ns   |
|                          |                    | $V_{DD}=10V$ | 100  | -    | -    | ns   |
|                          |                    | $V_{DD}=15V$ | 83   | -    | -    | ns   |
| clock input frequency    | $f_{max}$          | $V_{DD}=5V$  | dc   | -    | 1.25 | MHz  |
|                          |                    | $V_{DD}=10V$ |      | -    | 2.5  | MHz  |
|                          |                    | $V_{DD}=15V$ |      | -    | 3    | MHz  |
| clock rise and fall time | $t_{rCL}, t_{fCL}$ | $V_{DD}=5V$  | -    | -    | 15   | us   |
|                          |                    | $V_{DD}=10V$ | -    | -    | 5    | us   |
|                          |                    | $V_{DD}=15V$ | -    | -    | 5    | us   |



|                   |       |              |     |   |   |    |
|-------------------|-------|--------------|-----|---|---|----|
| strobe setup time | $t_w$ | $V_{DD}=5V$  | 200 | - | - | ns |
|                   |       | $V_{DD}=10V$ | 80  | - | - | ns |
|                   |       | $V_{DD}=15V$ | 70  | - | - | ns |

### 3.3、Electrical Characteristics

#### 3.3.1、DC Characteristics 1

( $T_{amb}=25^{\circ}C$ , voltages are referenced to  $V_{SS}$  (ground=0V), unless otherwise specified.)

| Parameter                 | Symbol   | Conditions (V) |          |          | $T_{amb}=25^{\circ}C$ |      |         | Unit |
|---------------------------|----------|----------------|----------|----------|-----------------------|------|---------|------|
|                           |          | $V_O$          | $V_{IN}$ | $V_{DD}$ | Min.                  | Typ. | Max.    |      |
| supply current            | $I_{DD}$ | -              | 0, 5     | 5        | -                     | -    | 5       | uA   |
|                           |          | -              | 0, 10    | 10       | -                     | -    | 10      | uA   |
|                           |          | -              | 0, 15    | 15       | -                     | -    | 20      | uA   |
| LOW-level output current  | $I_{OL}$ | 0.4            | 0, 5     | 5        | 0.51                  | 1    | -       | mA   |
|                           |          | 0.5            | 0, 10    | 10       | 1.3                   | 2.6  | -       | mA   |
|                           |          | 1.5            | 0, 15    | 15       | 3.4                   | 6.8  | -       | mA   |
| HIGH-level output current | $I_{OH}$ | 4.6            | 0, 5     | 5        | -0.51                 | -1   | -       | mA   |
|                           |          | 2.5            | 0, 5     | 5        | -1.6                  | -3.2 | -       | mA   |
|                           |          | 9.5            | 0, 10    | 10       | -1.3                  | -2.6 | -       | mA   |
|                           |          | 13.5           | 0, 15    | 15       | -3.4                  | -6.8 | -       | mA   |
| LOW-level output voltage  | $V_{OL}$ | -              | 0, 5     | 5        | -                     | 0    | 0.05    | V    |
|                           |          | -              | 0, 10    | 10       | -                     | 0    | 0.05    | V    |
|                           |          | -              | 0, 15    | 15       | -                     | 0    | 0.05    | V    |
| HIGH-level output voltage | $V_{OH}$ | -              | 0, 5     | 5        | 4.95                  | 5    | -       | V    |
|                           |          | -              | 0, 10    | 10       | 9.95                  | 10   | -       | V    |
|                           |          | -              | 0, 15    | 15       | 14.95                 | 15   | -       | V    |
| LOW-level input voltage   | $V_{IL}$ | 0.5, 4.5       | -        | 5        | -                     | -    | 1.5     | V    |
|                           |          | 1, 9           | -        | 10       | -                     | -    | 3       | V    |
|                           |          | 1.5, 13.5      | -        | 15       | -                     | -    | 4       | V    |
| HIGH-level input voltage  | $V_{IH}$ | 0.5, 4.5       | -        | 5        | 3.5                   | -    | -       | V    |
|                           |          | 1, 9           | -        | 10       | 7                     | -    | -       | V    |
|                           |          | 1.5, 13.5      | -        | 15       | 11                    | -    | -       | V    |
| input leakage current     | $I_I$    | -              | 0, 15    | 15       | -                     | -    | $\pm 1$ | uA   |
| OFF-state output current  | $I_{OZ}$ | 0, 15          | 0, 15    | 15       | -                     | -    | $\pm 1$ | uA   |



## 3.3.2、DC Characteristics 2

( $T_{amb}=-40^{\circ}\text{C}$  to  $+85^{\circ}\text{C}$ , voltages are referenced to  $V_{SS}$  (ground=0V), unless otherwise specified.)

| Parameter                 | Symbol   | Conditions (V) |          |          | $T_{amb}=-40^{\circ}\text{C}$ |         | $T_{amb}=+85^{\circ}\text{C}$ |          | Unit          |
|---------------------------|----------|----------------|----------|----------|-------------------------------|---------|-------------------------------|----------|---------------|
|                           |          | $V_O$          | $V_{IN}$ | $V_{DD}$ | Min.                          | Max.    | Min.                          | Max.     |               |
| supply current            | $I_{DD}$ | -              | 0, 5     | 5        | -                             | 5       | -                             | 150      | $\mu\text{A}$ |
|                           |          | -              | 0, 10    | 10       | -                             | 10      | -                             | 300      | $\mu\text{A}$ |
|                           |          | -              | 0, 15    | 15       | -                             | 20      | -                             | 600      | $\mu\text{A}$ |
| LOW-level output current  | $I_{OL}$ | 0.4            | 0, 5     | 5        | 0.61                          | -       | 0.42                          | -        | $\text{mA}$   |
|                           |          | 0.5            | 0, 10    | 10       | 1.5                           | -       | 1.1                           | -        | $\text{mA}$   |
|                           |          | 1.5            | 0, 15    | 15       | 4                             | -       | 2.8                           | -        | $\text{mA}$   |
| HIGH-level output current | $I_{OH}$ | 4.6            | 0, 5     | 5        | -0.61                         | -       | -0.42                         | -        | $\text{mA}$   |
|                           |          | 2.5            | 0, 5     | 5        | -1.8                          | -       | -1.3                          | -        | $\text{mA}$   |
|                           |          | 9.5            | 0, 10    | 10       | -1.5                          | -       | -1.1                          | -        | $\text{mA}$   |
|                           |          | 13.5           | 0, 15    | 15       | -4                            | -       | -2.8                          | -        | $\text{mA}$   |
| LOW-level output voltage  | $V_{OL}$ | -              | 0, 5     | 5        | -                             | 0.05    | -                             | 0.05     | V             |
|                           |          | -              | 0, 10    | 10       | -                             | 0.05    | -                             | 0.05     | V             |
|                           |          | -              | 0, 15    | 15       | -                             | 0.05    | -                             | 0.05     | V             |
| HIGH-level output voltage | $V_{OH}$ | -              | 0, 5     | 5        | 4.95                          | -       | 4.95                          | -        | V             |
|                           |          | -              | 0, 10    | 10       | 9.95                          | -       | 9.95                          | -        | V             |
|                           |          | -              | 0, 15    | 15       | 14.95                         | -       | 14.95                         | -        | V             |
| LOW-level input voltage   | $V_{IL}$ | 0.5, 4.5       | -        | 5        | -                             | 1.5     | -                             | 1.5      | V             |
|                           |          | 1, 9           | -        | 10       | -                             | 3       | -                             | 3        | V             |
|                           |          | 1.5, 13.5      | -        | 15       | -                             | 4       | -                             | 4        | V             |
| HIGH-level input voltage  | $V_{IH}$ | 0.5, 4.5       | -        | 5        | 3.5                           | -       | 3.5                           | -        | V             |
|                           |          | 1, 9           | -        | 10       | 7                             | -       | 7                             | -        | V             |
|                           |          | 1.5, 13.5      | -        | 15       | 11                            | -       | 11                            | -        | V             |
| input leakage current     | $I_I$    | -              | 0, 15    | 15       | -                             | $\pm 1$ | -                             | $\pm 1$  | $\mu\text{A}$ |
| OFF-state output current  | $I_{OZ}$ | 0, 15          | 0, 15    | 15       | -                             | $\pm 1$ | -                             | $\pm 12$ | $\mu\text{A}$ |



### 3.3.3、DC Characteristics 3

( $T_{amb}=-40^{\circ}\text{C}$  to  $+125^{\circ}\text{C}$ , voltages are referenced to  $V_{SS}$  (ground=0V), unless otherwise specified.)

| Parameter                 | Symbol   | Conditions (V) |          |          | $T_{amb}=-40^{\circ}\text{C}$ |         | $T_{amb}=+125^{\circ}\text{C}$ |          | Unit          |
|---------------------------|----------|----------------|----------|----------|-------------------------------|---------|--------------------------------|----------|---------------|
|                           |          | $V_O$          | $V_{IN}$ | $V_{DD}$ | Min.                          | Max.    | Min.                           | Max.     |               |
| supply current            | $I_{DD}$ | -              | 0, 5     | 5        | -                             | 5       | -                              | 150      | $\mu\text{A}$ |
|                           |          | -              | 0, 10    | 10       | -                             | 10      | -                              | 300      | $\mu\text{A}$ |
|                           |          | -              | 0, 15    | 15       | -                             | 20      | -                              | 600      | $\mu\text{A}$ |
| LOW-level output current  | $I_{OL}$ | 0.4            | 0, 5     | 5        | 0.61                          | -       | 0.36                           | -        | $\text{mA}$   |
|                           |          | 0.5            | 0, 10    | 10       | 1.5                           | -       | 0.9                            | -        | $\text{mA}$   |
|                           |          | 1.5            | 0, 15    | 15       | 4                             | -       | 2.4                            | -        | $\text{mA}$   |
| HIGH-level output current | $I_{OH}$ | 4.6            | 0, 5     | 5        | -0.61                         | -       | -0.36                          | -        | $\text{mA}$   |
|                           |          | 2.5            | 0, 5     | 5        | -1.8                          | -       | -1.15                          | -        | $\text{mA}$   |
|                           |          | 9.5            | 0, 10    | 10       | -1.5                          | -       | -0.9                           | -        | $\text{mA}$   |
|                           |          | 13.5           | 0, 15    | 15       | -4                            | -       | -2.4                           | -        | $\text{mA}$   |
| LOW-level output voltage  | $V_{OL}$ | -              | 0, 5     | 5        | -                             | 0.05    | -                              | 0.05     | V             |
|                           |          | -              | 0, 10    | 10       | -                             | 0.05    | -                              | 0.05     | V             |
|                           |          | -              | 0, 15    | 15       | -                             | 0.05    | -                              | 0.05     | V             |
| HIGH-level output voltage | $V_{OH}$ | -              | 0, 5     | 5        | 4.95                          | -       | 4.95                           | -        | V             |
|                           |          | -              | 0, 10    | 10       | 9.95                          | -       | 9.95                           | -        | V             |
|                           |          | -              | 0, 15    | 15       | 14.95                         | -       | 14.95                          | -        | V             |
| LOW-level input voltage   | $V_{IL}$ | 0.5, 4.5       | -        | 5        | -                             | 1.5     | -                              | 1.5      | V             |
|                           |          | 1, 9           | -        | 10       | -                             | 3       | -                              | 3        | V             |
|                           |          | 1.5, 13.5      | -        | 15       | -                             | 4       | -                              | 4        | V             |
| HIGH-level input voltage  | $V_{IH}$ | 0.5, 4.5       | -        | 5        | 3.5                           | -       | 3.5                            | -        | V             |
|                           |          | 1, 9           | -        | 10       | 7                             | -       | 7                              | -        | V             |
|                           |          | 1.5, 13.5      | -        | 15       | 11                            | -       | 11                             | -        | V             |
| input leakage current     | $I_I$    | -              | 0, 15    | 15       | -                             | $\pm 1$ | -                              | $\pm 1$  | $\mu\text{A}$ |
| OFF-state output current  | $I_{OZ}$ | 0, 15          | 0, 15    | 15       | -                             | $\pm 1$ | -                              | $\pm 12$ | $\mu\text{A}$ |



### 3.3.4、AC Characteristics

( $T_{amb}=25^{\circ}C$ ,  $V_{SS}=0V$ ,  $t_r, t_f=20ns$ ,  $C_L=50pF$ ,  $R_L=200k\Omega$ , unless otherwise specified.)

| Parameter   | Symbol             | Conditions                                 | Min.         | Typ. | Max. | Unit |     |
|---|--------------------|--|--------------|------|------|------|-----|
| propagation delay time                                | $t_{PHL}, t_{PLH}$ | CP to QS1;<br>see Figure 6                 | $V_{DD}=5V$  | -    | 300  | 600  | ns  |
|   |                    |  | $V_{DD}=10V$ | -    | 125  | 250  | ns  |
|   |                    |  | $V_{DD}=15V$ | -    | 95   | 190  | ns  |
|   |                    | CP to QS2;<br>see Figure 6                 | $V_{DD}=5V$  | -    | 230  | 460  | ns  |
|   |                    |  | $V_{DD}=10V$ | -    | 110  | 220  | ns  |
|   |                    |  | $V_{DD}=15V$ | -    | 75   | 150  | ns  |
|   |                    | CP to QPn;<br>see Figure 6                 | $V_{DD}=5V$  | -    | 420  | 840  | ns  |
|   |                    |  | $V_{DD}=10V$ | -    | 195  | 390  | ns  |
|   |                    |  | $V_{DD}=15V$ | -    | 135  | 270  | ns  |
|   |                    | STR to QPn;<br>see Figure 7                | $V_{DD}=5V$  | -    | 290  | 580  | ns  |
|   |                    |  | $V_{DD}=10V$ | -    | 145  | 290  | ns  |
|   |                    |  | $V_{DD}=15V$ | -    | 100  | 200  | ns  |
| HIGH to OFF-state/OFF-state to HIGH propagation delay | $t_{PHZ}, t_{PZH}$ | OE to QPn;<br>see Figure 8                 | $V_{DD}=5V$  | -    | 140  | 280  | ns  |
|   |                    |  | $V_{DD}=10V$ | -    | 60   | 120  | ns  |
|   |                    |  | $V_{DD}=15V$ | -    | 45   | 90   | ns  |
| LOW to OFF-state/OFF-state to LOW propagation delay   | $t_{PLZ}, t_{PZL}$ | OE to QPn;<br>see Figure 8                 | $V_{DD}=5V$  | -    | 100  | 200  | ns  |
|   |                    |  | $V_{DD}=10V$ | -    | 50   | 100  | ns  |
|   |                    |  | $V_{DD}=15V$ | -    | 40   | 80   | ns  |
| pulse width   | $t_w$              | minimum HIGH strobe pulse;<br>see Figure 7 | $V_{DD}=5V$  | -    | 100  | 200  | ns  |
|   |                    |  | $V_{DD}=10V$ | -    | 40   | 80   | ns  |
|   |                    |  | $V_{DD}=15V$ | -    | 35   | 70   | ns  |
|   |                    | minimum LOW clock pulse;<br>see Figure 6   | $V_{DD}=5V$  | -    | 100  | 200  | ns  |
|   |                    |  | $V_{DD}=10V$ | -    | 50   | 100  | ns  |
|   |                    |  | $V_{DD}=15V$ | -    | 40   | 83   | ns  |
| data setup time                                       | $t_{su}$           | D to CP;<br>see Figure 9                   | $V_{DD}=5V$  | -    | 60   | 125  | ns  |
|   |                    |  | $V_{DD}=10V$ | -    | 30   | 55   | ns  |
|   |                    |  | $V_{DD}=15V$ | -    | 20   | 35   | ns  |
| transition time                                       | $t_t$              | -  | $V_{DD}=5V$  | -    | 100  | 200  | ns  |
|   |                    |  | $V_{DD}=10V$ | -    | 50   | 100  | ns  |
|   |                    |  | $V_{DD}=15V$ | -    | 40   | 80   | ns  |
| clock input rise and fall time                        | $t_{rCL}, t_{fCL}$ | -  | $V_{DD}=5V$  | 15   | -    | -    | us  |
|   |                    |  | $V_{DD}=10V$ | 5    | -    | -    | us  |
|   |                    |  | $V_{DD}=15V$ | 5    | -    | -    | us  |
| maximum clock frequency                               | $f_{max}$          | see Figure 6                               | $V_{DD}=5V$  | 1.25 | 2.5  | -    | MHz |
|   |                    |  | $V_{DD}=10V$ | 2.5  | 5    | -    | MHz |
|   |                    |  | $V_{DD}=15V$ | 3    | 6    | -    | MHz |
| input capacitance                                     | $C_i$              | any input                                  | -            | 5    | 7.5  | pF   |     |

Note:  $t_t$  is the same as  $t_{TLH}$  and  $t_{THL}$ .



## 4、Testing Circuit

### 4.1、AC Testing Circuit

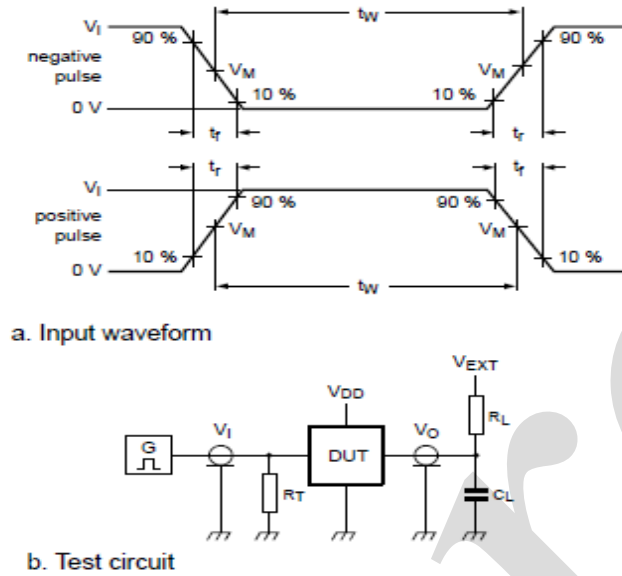


Figure 5. Test circuit for switching times

Definitions for test circuit:

DUT=Device Under Test.

$C_L$ =Load capacitance including jig and probe capacitance.

$R_T$ =Termination resistance should be equal to the output impedance  $Z_o$  of the pulse generator.

$R_L$ =Load resistance.

$V_{EXT}$ =External voltage for measuring switching times.

### 4.2、AC Testing Waveforms

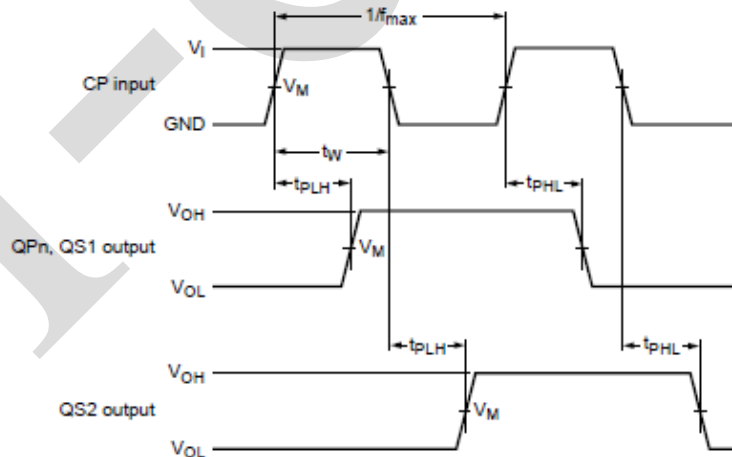


Figure 6. Clock to outputs propagation delays, and clock pulse width and maximum frequency





### 4.3、Measurement Points

| Supply voltage | Input               | Output              |                     |                     |
|----------------|---------------------|---------------------|---------------------|---------------------|
| $V_{DD}$       | $V_M$               | $V_M$               | $V_X$               | $V_Y$               |
| 5V to 15V      | $0.5 \times V_{DD}$ | $0.5 \times V_{DD}$ | $0.1 \times V_{DD}$ | $0.9 \times V_{DD}$ |

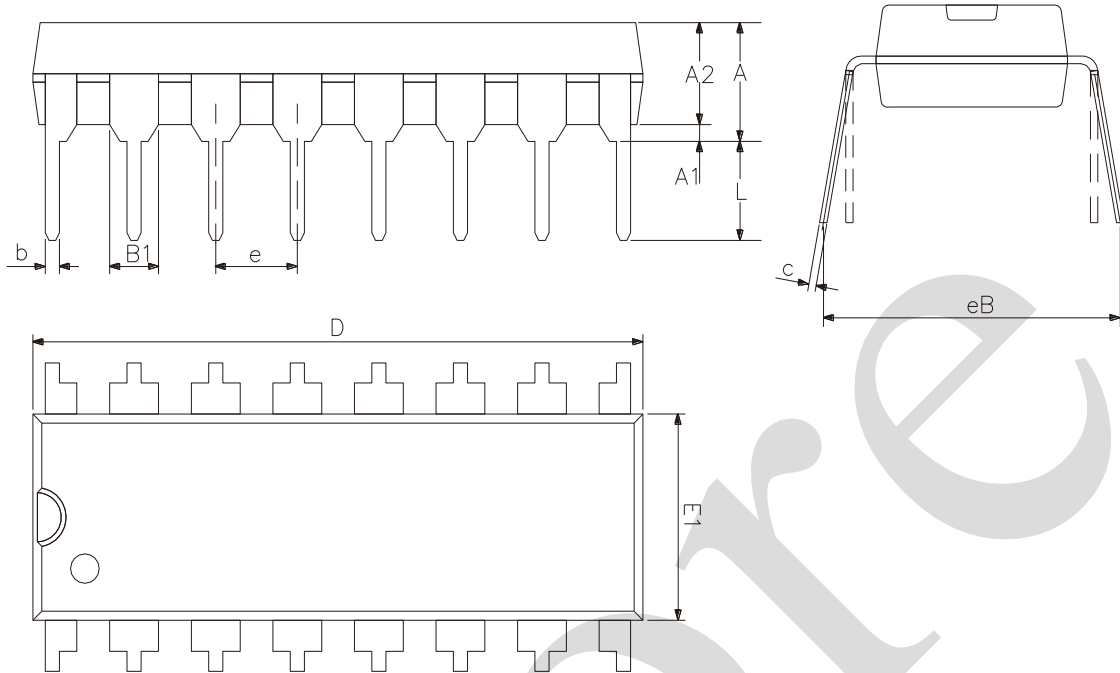
### 4.4、Test Data

| Supply voltage | Input                |             | Load  |             | $V_{EXT}$               |                         |                         |
|----------------|----------------------|-------------|-------|-------------|-------------------------|-------------------------|-------------------------|
| $V_{DD}$       | $V_I$                | $t_r, t_f$  | $C_L$ | $R_L$       | $t_{PHL},$<br>$t_{PLH}$ | $t_{PHZ},$<br>$t_{PZH}$ | $t_{PLZ},$<br>$t_{PZL}$ |
| 5V to 15V      | $V_{SS}$ or $V_{DD}$ | $\leq 20ns$ | 50pF  | 1k $\Omega$ | open                    | $V_{SS}$                | $V_{DD}$                |



## 5、Package Information

### 5.1、DIP16

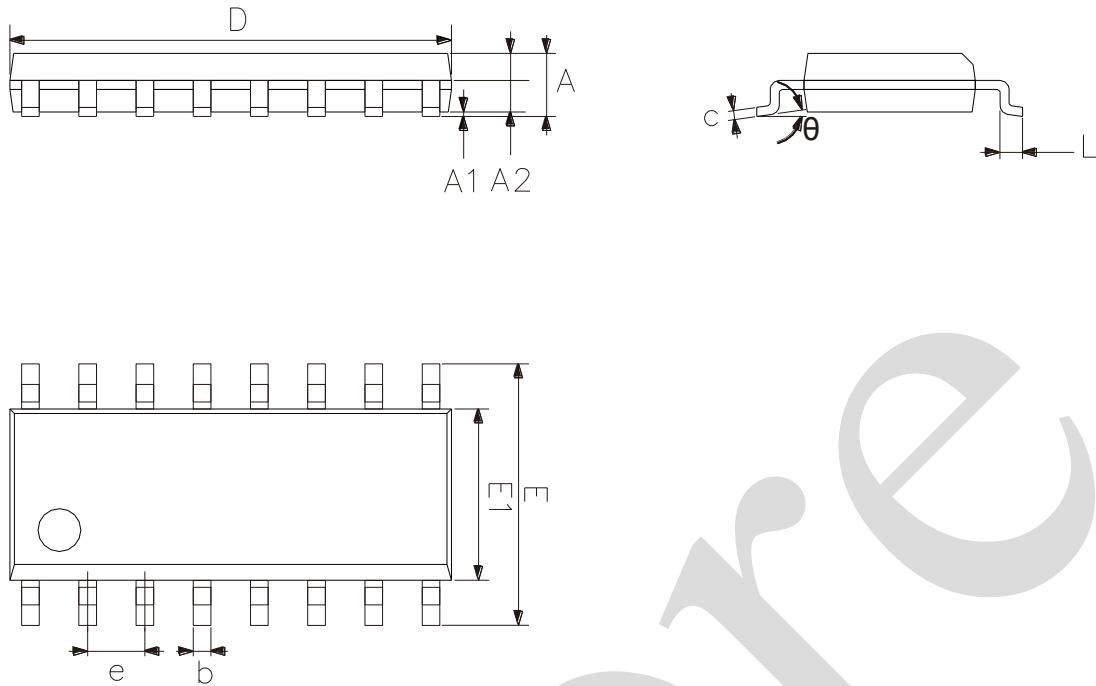


| 2023/12/A | Dimensions In Millimeters |       |
|-----------|---------------------------|-------|
| Symbol    | Min                       | Max   |
| A2        | 3.00                      | 3.60  |
| A1        | 0.51                      | —     |
| A         | 3.60                      | 5.33  |
| L         | 3.00                      | 3.60  |
| b         | 0.36                      | 0.56  |
| B1        | 1.52                      |       |
| D         | 18.80                     | 19.94 |
| E1        | 6.20                      | 6.60  |
| e         | 2.54                      |       |
| c         | 0.20                      | 0.36  |
| eB        | 7.62                      | 9.30  |

Note: The package dimensions do not include flash and burrs, and the dimensions of flash and burrs shall not exceed 0.15mm.



## 5.2、SOP16

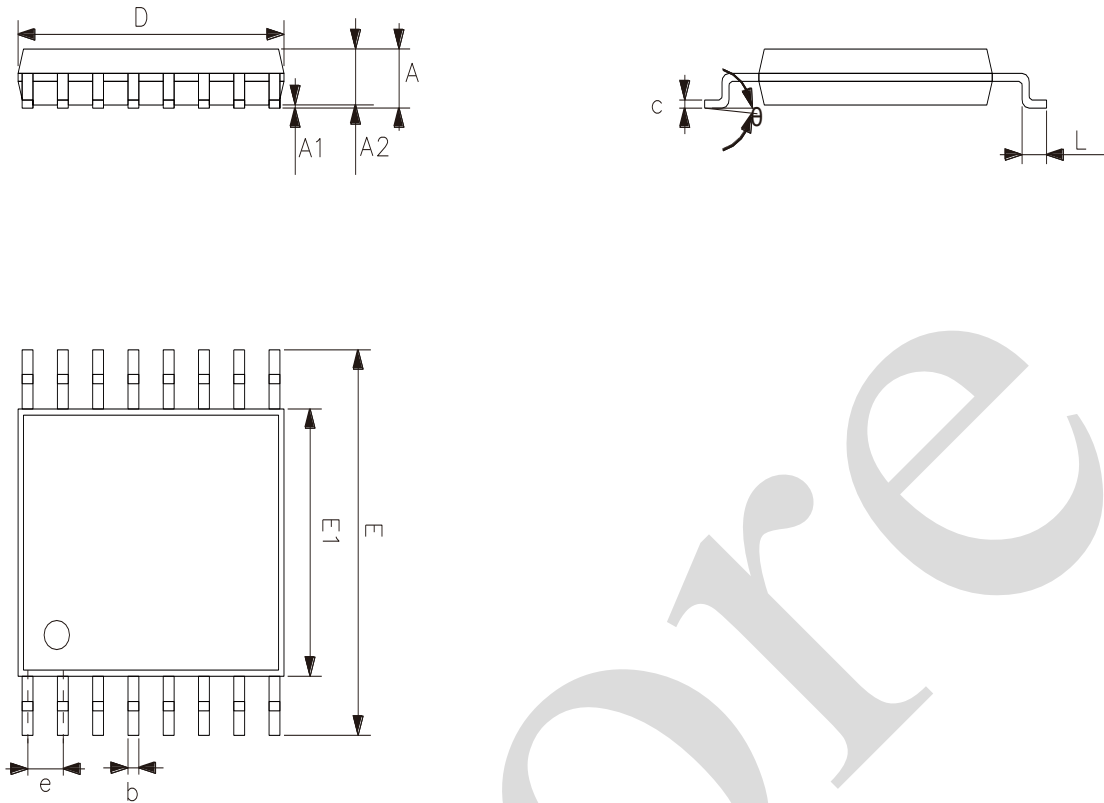


| 2023/12/A | Dimensions In Millimeters |       |
|-----------|---------------------------|-------|
| Symbol    | Min.                      | Max.  |
| A         | 1.35                      | 1.80  |
| A1        | 0.10                      | 0.25  |
| A2        | 1.25                      | 1.55  |
| b         | 0.33                      | 0.51  |
| c         | 0.19                      | 0.25  |
| D         | 9.50                      | 10.10 |
| E         | 5.80                      | 6.30  |
| E1        | 3.70                      | 4.10  |
| e         | 1.27                      |       |
| L         | 0.35                      | 0.89  |
| $\theta$  | 0°                        | 8°    |

Note: The package dimensions do not include flash and burrs, and the dimensions of flash and burrs shall not exceed 0.15mm.



## 5.3、TSSOP16



| 2023/12/A | Dimensions In Millimeters |      |
|-----------|---------------------------|------|
| Symbol    | Min                       | Max  |
| A         | —                         | 1.20 |
| A1        | 0.05                      | 0.15 |
| A2        | 0.80                      | 1.05 |
| b         | 0.19                      | 0.30 |
| c         | 0.09                      | 0.20 |
| D         | 4.90                      | 5.10 |
| E1        | 4.30                      | 4.50 |
| E         | 6.20                      | 6.60 |
| e         | 0.65                      |      |
| L         | 0.45                      | 0.75 |
| $\theta$  | 0°                        | 8°   |

Note: The package dimensions do not include flash and burrs, and the dimensions of flash and burrs shall not exceed 0.15mm.



## 6、 Statements And Notes

### 6.1、 The name and content of Hazardous substances or Elements in the product

| Part name               | Hazardous substances or Elements  |                               |                               |                               |                          |                                |                   |                       |                           |                      |
|-------------------------|---|-------------------------------|-------------------------------|-------------------------------|--------------------------|--------------------------------|-------------------|-----------------------|---------------------------|----------------------|
|                         | Lead and lead compounds   | Mercury and mercury compounds | Cadmium and cadmium compounds | Hexavalent chromium compounds | Polybrominated biphenyls | Polybrominated biphenyl ethers | Dibutyl phthalate | Butylbenzyl phthalate | Di-2-ethylhexyl phthalate | Diisobutyl phthalate |
| Lead frame              | ○   | ○                             | ○                             | ○                             | ○                        | ○                              | ○                 | ○                     | ○                         | ○                    |
| Plastic resin           | ○   | ○                             | ○                             | ○                             | ○                        | ○                              | ○                 | ○                     | ○                         | ○                    |
| Chip                    | ○   | ○                             | ○                             | ○                             | ○                        | ○                              | ○                 | ○                     | ○                         | ○                    |
| The lead                | ○   | ○                             | ○                             | ○                             | ○                        | ○                              | ○                 | ○                     | ○                         | ○                    |
| Plastic sheet installed | ○   | ○                             | ○                             | ○                             | ○                        | ○                              | ○                 | ○                     | ○                         | ○                    |
| explanation             | ○: Indicates that the content of hazardous substances or elements in the detection limit of the following the SJ/T11363-2006 standard.<br>×: Indicates that the content of hazardous substances or elements exceeding the SJ/T11363-2006 Standard limit requirements. |                               |                               |                               |                          |                                |                   |                       |                           |                      |

### 6.2、 Notes

We recommend you to read this chapter carefully before using this product.

The information in this chapter is provided for reference only and i-Core disclaims any express or implied warranties, including but not limited to applicability, special application or non-infringement of third party rights.

This product is not suitable for critical equipment such as life-saving, life-sustaining or safety equipment. It is also not suitable for applications that may result in personal injury, death, or serious property or environmental damage due to product malfunction or failure. I-Core will not be liable for any damages incurred by the customers at their own risk for such applications.

The customer is responsible for conducting all necessary tests i-Core's application to avoid failure in the application or the application of the customer's third party users. I-Core does not accept any liability.

The Company reserves the right to change or improve the information published in this chapter at any time. The information in this chapter are subject to change without notice. We recommend the customer to consult our sales staff before purchasing.

Please obtain related materials form i-Core's regular channels and we are not responsible for its content if it is provided by sources other than our company.

In case of any conflict between the Chinese and English version, the version is subject to the Chinese one.